

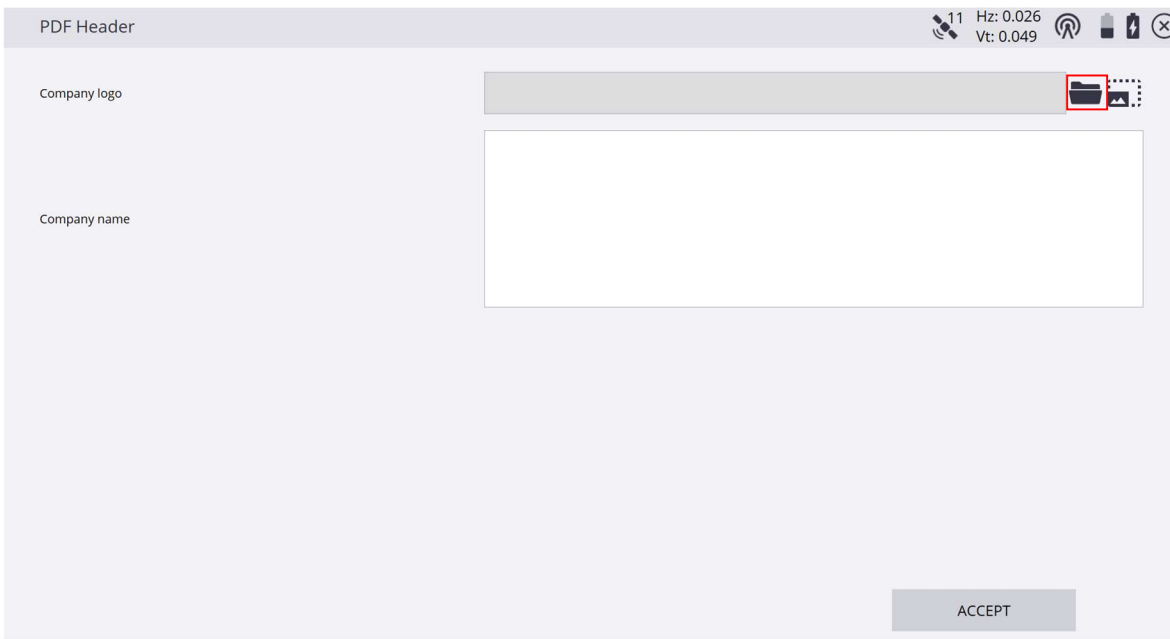
PDF Logo Setup

This is used to have your company logo on the PDF's that Siteworks can create to make your documents more professional and personalized. Before getting started have a picture of the logo in .jpg format and place it in the **Trimble SCS900 data** folder where you would place your project's normally.

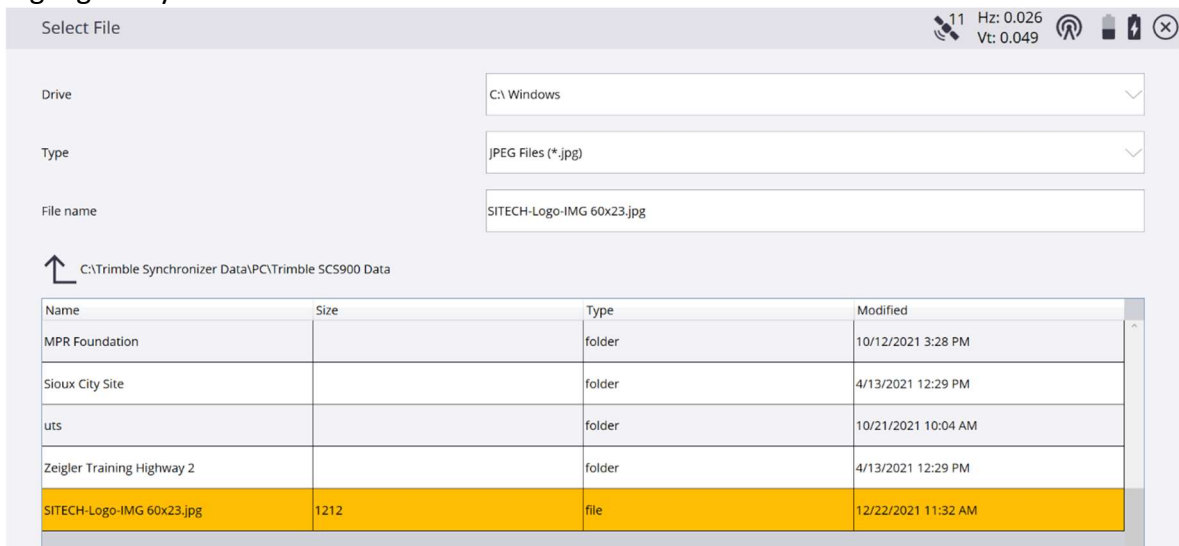
1. Click the setting in the top right



2. Select the **Settings** drop down and select **PDF Settings**
3. Click the file button



4. In the bottom half of the screen locate the picture name and select it so it is highlighted yellow



5. Tap **Accept** in the bottom right once you have the correct .jpg selected
6. You will then get a preview of the logo that is attached. Tap **Accept** when finished
7. Type in the company name in the **Company Name** category and tap accept when finished